

KNIFE CRIME

in the community.

Who are we and what do we do?

- At N3W ANGLE, **we don't give up on young people** – we've been there, and we made it out.
- Through our won **real-life experiences**, we support young people, parents and professionals a wide range of services.
- Our services are for **at-risk young people aged 8–25** to prevent them from being caught up in or being exploited by crime.
- We work in local communities in partnership with schools, academy trusts, local authorities, parents, carers and organisations.



WHAT IS THE GROOMING LINE?

Targeting Stage



Selecting a young with vulnerabilities that make them targets for exploitation

Friendship Forming Stage



Developing trust by offering them support, protection and listening to them

Loving Relationship Stage



Becoming their best friend, partner or older sibling figure they now depend on

Abusive Relationship Stage



Abusing their trust for criminal or sexual exploitation, using them for their own gain

**Why are young people
carrying knives?**

Why are young people carrying knives?



Fear



Protection



Social Pressure



Peer Pressure



Social Media



Not Being a Victim

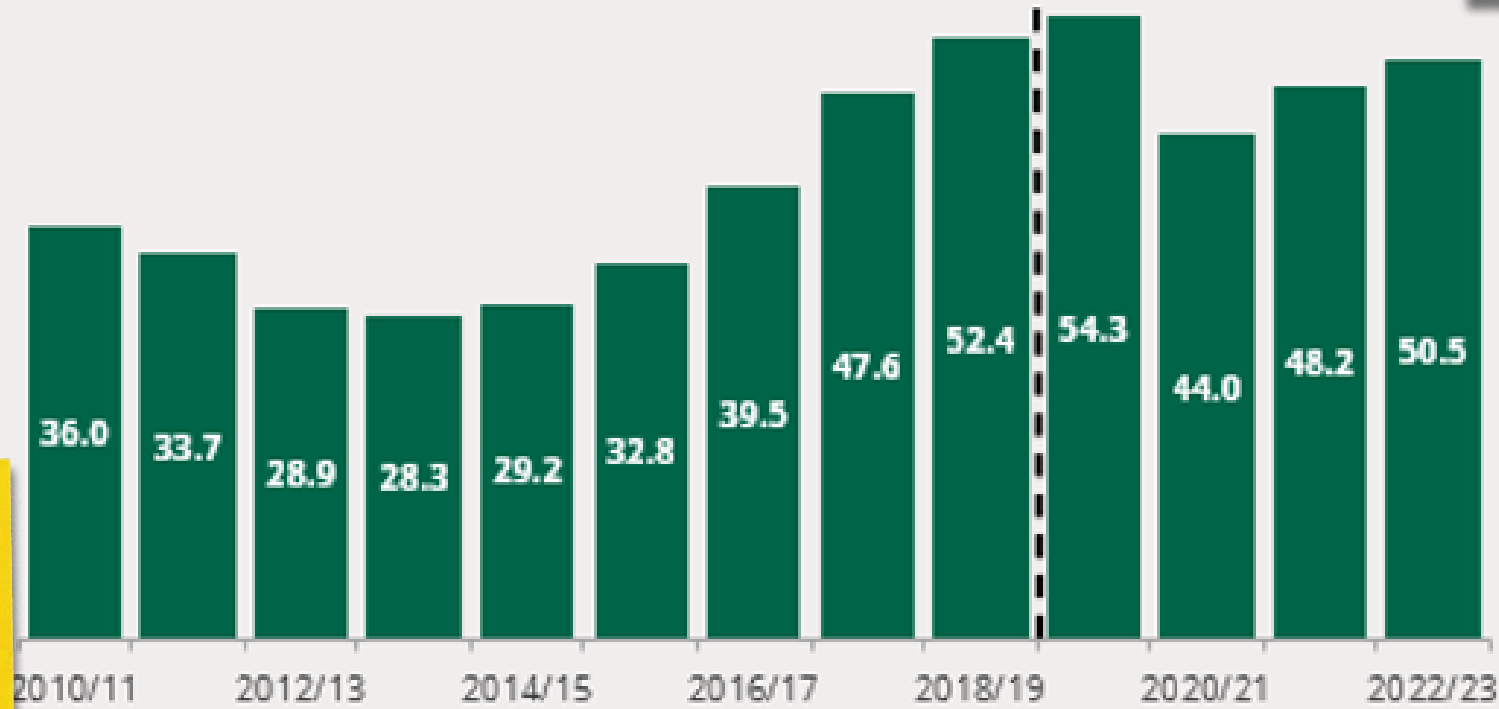
The increase in knife crime

The Police recorded crime involving a knife or sharp instrument for a selection of serious violent offences

There is a clear link between the cost-of-living crisis and the rise of violent crimes

Selected offences involving a knife or sharp instrument

Year ending March, England and Wales, including Greater Manchester and from year ending March 2020 excluding Devon and Cornwall (thousands)



In the year ending December 2023, there were around 49,000 (selected) offences involving a knife or sharp instrument in England & Wales

Robberies involving a knife or sharp instrument grew 20% on last year

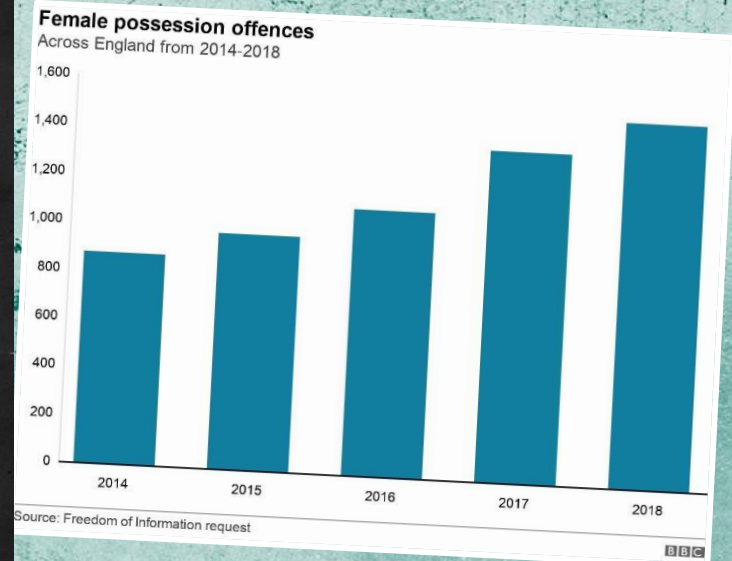
The increase in women carrying knives



Police figures from England show a **73% rise over five years** in women and girls being charged with "possession offences" as a result of carrying a knife.

Knife possession offences involving women in England have increased steeply since 2014 – **rising by at least 10% every year.**

Youth workers say some women carry weapons for gangs as they are less likely to be stopped by police.

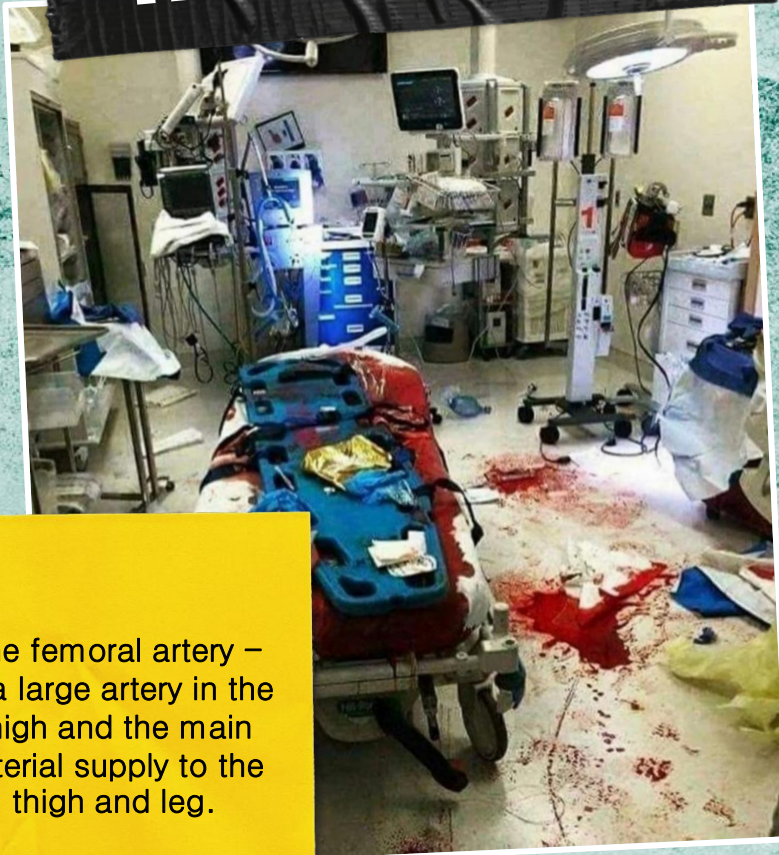


WARNING:

**SOME MAY FIND THE FOLLOWING
IMAGES DISTURBING**

Consequences of knife crime

INJURIES !



The femoral artery –
Is a large artery in the
thigh and the main
arterial supply to the
thigh and leg.

Stoma – To create a
stoma, your doctor
will pull part of your
small or large
intestine onto the
surface of your skin
and sew it onto an
opening in your
abdomen.



Face slice – Is a very
common injury which
can leave permanent
scars and create a
risk of infections.



Consequences of knife crime



Being in possession of a bladed article can carry a maximum sentence of 4 years.



A criminal past can sometimes stop you from travelling to other countries.



Witnessing or being involved in knife crime can be traumatic and can lead to mental health problem.



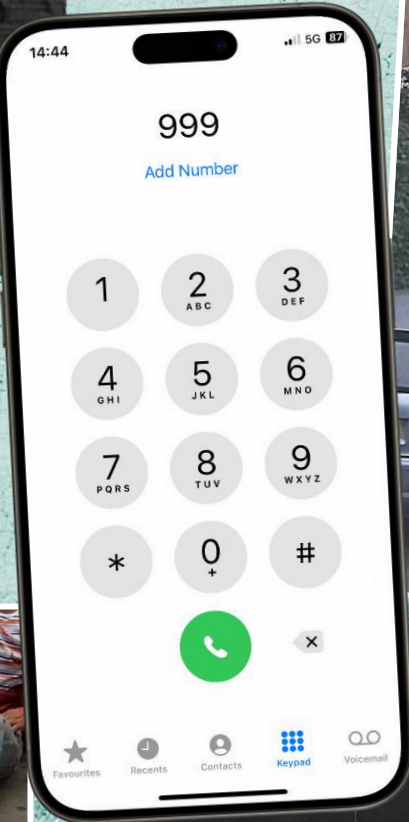
It can also prevent you from going to colleges or universities and impact your employability.

WARNING:

**SOME MAY FIND THE FOLLOWING
IMAGES DISTURBING**

What's next ?

Paramedics must get the all clear from the Police before starting their procedure



On average it can take around 15 minutes for an ambulance to arrive on site depending on location.



The UK trauma system is made up of **22 regional trauma networks**. Teenagers accounted for more than 1,000 admissions to hospital as a result of assaults with a knife or sharp object last year, NHS figures show.

Doctors warned that high street sales of knives is helping to fuel the rise in stabbings and called on retailers to do more to stem the tide of available weapons.





Nathaniel Shani

(14 years old)

Two teenage boys aged 14 and 13 years, met Nathaniel in an alleyway in Manchester, for a prearranged fight to ‘settle differences’, after a friend of Nathaniel’s had cannabis stolen from him.

They two teenage boys were armed with a knife and a screwdriver. Nathaniel was unarmed.

The fight lasted seconds and Nathaniel was stabbed in the neck. He died as a result of that injury moments later. The fight was captured on CCTV.

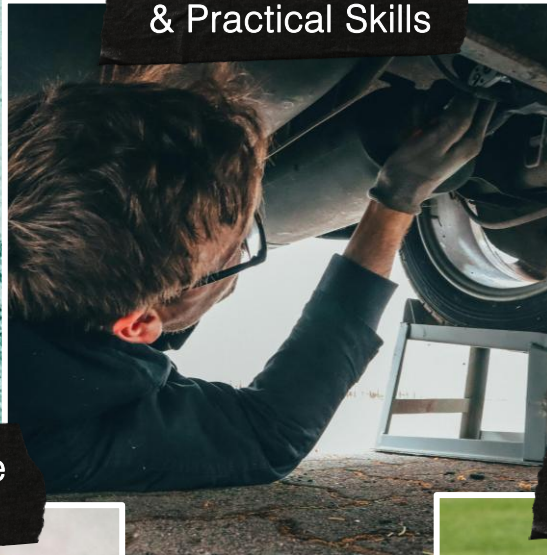
Manchester Crown Court found both teenagers guilty of murder.

What are my options?

Further Your Education



Apprenticeships & Practical Skills



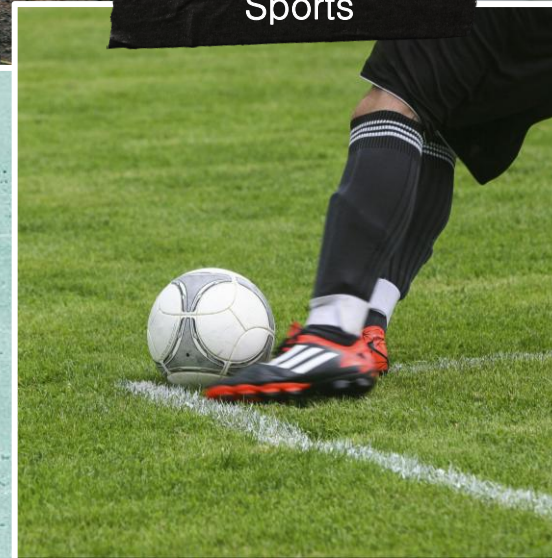
Entrepreneur Start A Business



Travel & Explore New Things



Professional Sports



Alternate Career Paths



Ben Francis is the UK's youngest billionaire. He started Gymshark when he was 19 from his parent's garage whilst working as a pizza delivery driver.



Birmingham entrepreneur built multi-million-pound brand: Hoodrich with only £200 and 30 printed t-shirts from his bedroom. Jay Williams' started out working at Iceland Supermarket.



Ama Amo-Agyei lost her job and with just £100 working from her mum's kitchen in 2020, she launched haircare brand Plantmade that has now generated £11M.

Stay safe and make the right choices



Being in possession of a knife is only decreasing your goals and future ambitions



Always put yourself first



Speak to those you can trust



The ones that really love you are the ones that have your back!

Thank You!

Questions?

Want to learn
more? Follow us
on Instagram!

@N3WANGLE

