



RIVER ACADEMY

Yr 7 Parent Welcome Evening

September 17th 2025



Aim High



Be Inclusive



Work Together



Aim High



Be Inclusive



Work Together



RIVER
ACADEMY

The purpose of this evening



To share with you some of our excitement of what is happening at River Academy



To give you insights into the curriculum and how your child can be successful as a River Academy student in Year 8



For you to meet some of our key staff and put faces to names



Aim High



Be Inclusive



Work Together



RIVER
ACADEMY

Key staff

- Mr Andy Hartley- Headteacher
- Mrs Laura Billingham – Deputy Headteacher
- Mr Jamie Rosser- Head of Year 8
- Mrs Sarah Strong- Head of Mathematics and Home Learning
- Tutors!



Aim High



Be Inclusive



Work Together



RIVER
ACADEMY

The last days of term!





Aim High



Be Inclusive

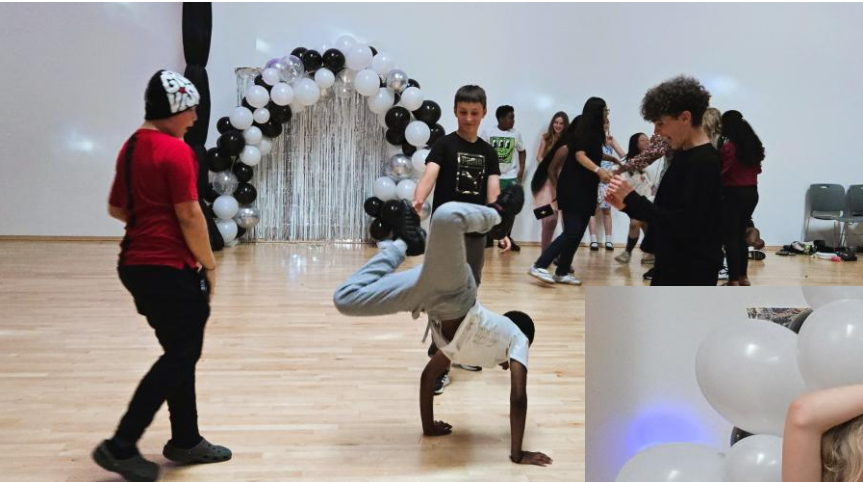


Work Together



RIVER
ACADEMY

The last days of term!





Aim High

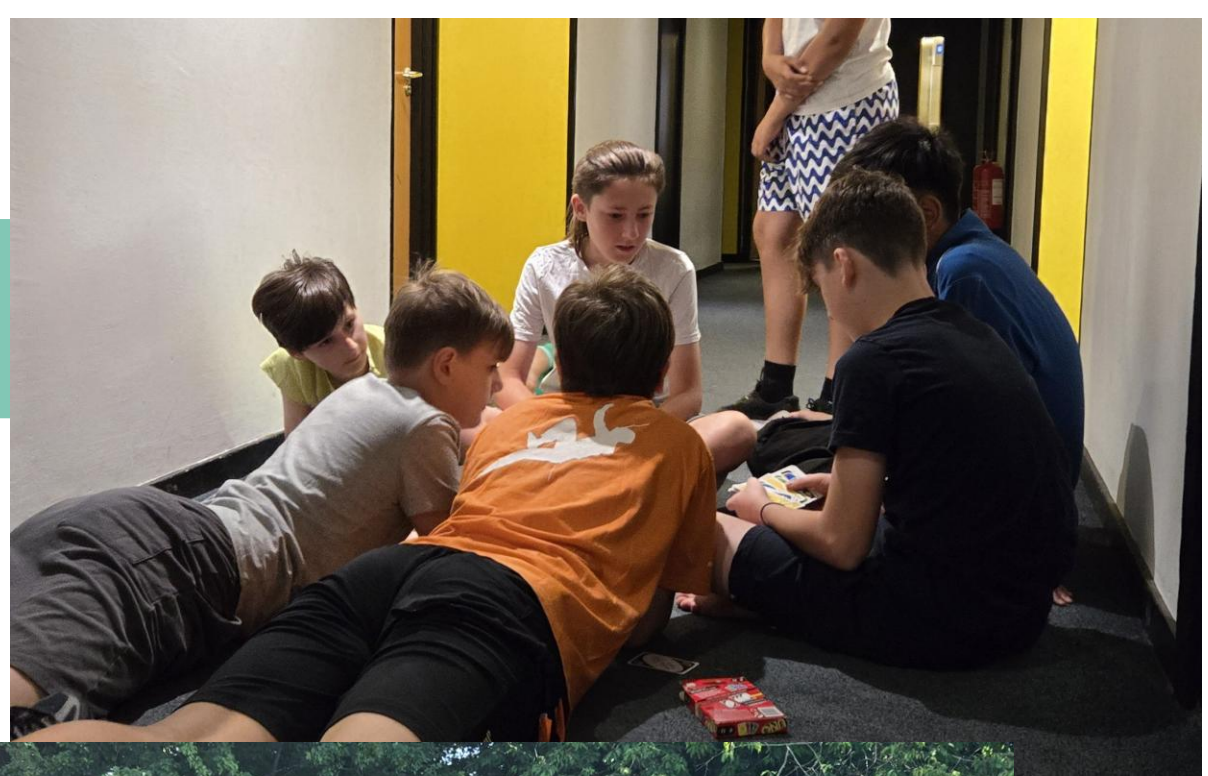


Be Inclusive



Work Together

The last days of term





Aim High



Be Inclusive



Work Together



RIVER ACADEMY

Metrics from last year

- Reading age test showed the school had improved from the **53rd percentile to the 72nd percentile** over the course of Year 7. All subgroups made good progress, especially the weaker readers.
- Very low staff absence – no external cover used all year
- Overall student attendance – 95.2%
- SEND students thriving- attendance (10% above national) and progress accelerated
- Junior Maths Challenge- 66% of participants gained awards
- Student engagement in Sparx Maths/Sparx Reader – Top 5 in the country every week out of 2900 schools
- Girls' Sport – 65% turn out and Reading Netball League winners
- Waiting list for September - 40+ and 13 appeals
- External interest – Visits most weeks from fellow educators



Mr Dukinfield
7 Loddon

- Charter
- ① Patient + respectful when others are talking
 - ② Aim for the most marks
 - ③ I remind everyone, all the time.

What are the benefits of mobile phones?
What are the risks of mobile phones?
What are the benefits of mobile phones?
What are the risks of mobile phones?

Mr Dukinfield

7 Loddon

7 Loddon

7 Loddon

7 Loddon

7 Loddon

7 Loddon

7 Loddon

7 Loddon

7 Loddon

7 Loddon

7 Loddon

7 Loddon

7 Loddon



Using your Planner

Student Behaviour

14.9.25

Last and proud
Personal practice
Charal response
Do it your better
All hands up

124

Personal and Organizational

Using your Planner

Student Behaviour

Student Behaviour

Using your Planner

Student Behaviour

River Academy Values

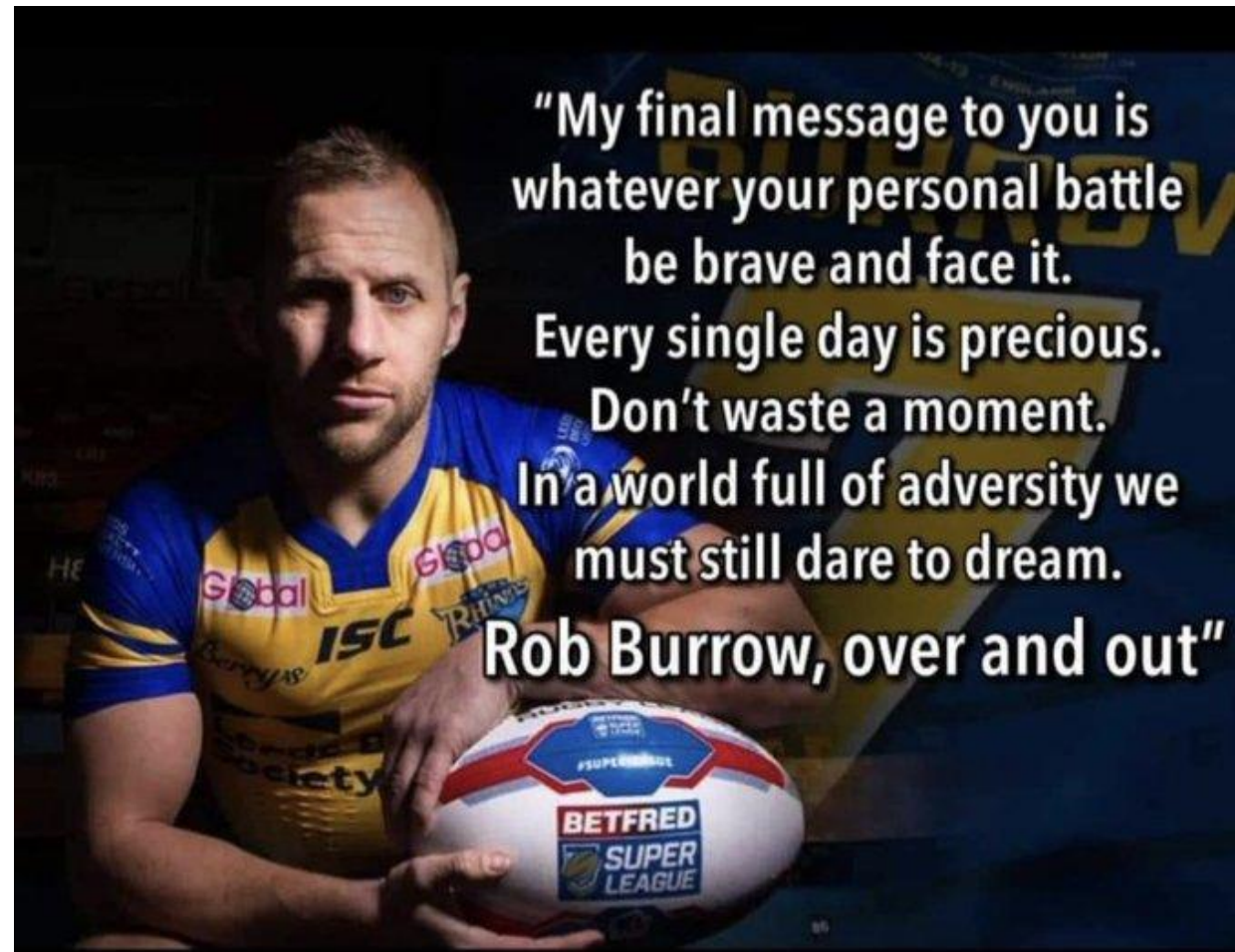


Our aim/ Our purpose/ Why we are here

- “Qualifications and choices”
- “So you can learn enough to do some good in the world.”



Our student's will only get one chance!



High standards, low tolerance

- Uniform
 - Tools for Learning
 - Appearance
 - Focus in the classroom
 - Behaviour
-
- Routines that aim to ensure focused learning, punctuality, safety and high levels of progress

Movement

- Line Ups
- Calm and quiet corridors
- Students walking on the left
- Pencil cases out, outdoor coats off, straight to their lessons
- Routines for the distribution of books/booklets
- Exit routines
- Staff visibility on corridors

Electives

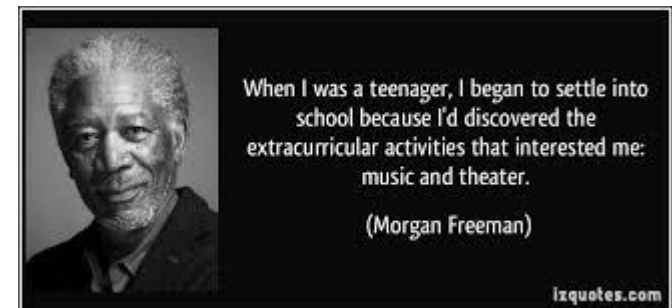
Wednesdays- started today

Everyone involved

Rowing, Netball, Art, Board games, Chess, First Aid, Mindful colouring, badminton, piano, etc

Termly swaps

The school that plays together will be stronger



Celebration Fridays and joy

Lessons on a Friday are 55 minutes
14.50 and we all head into the hall
and finish the week with an
'Achievement Assembly'
Smiles!



Merits and Demerits



1000-2000 merits a
day per year group

versus

30-40 demerits a
day

Christmas Celebration evening

- 16th December 2025 6pm
- By invitation....
- Awards, music and fun



Dining

- Still working on the timings- we know it's not quite there!!
- Poems, questions...
- Nourishing food
- Time to eat properly
- Knives and forks! Cutlery and crockery
- Community

Detentions

- Breaktime- 15 minutes- uniform, equipment, gum, line up conduct
- After school same day detentions for behaviour issues or homework- usually 40 minutes- you will be informed by text/message on our app- 3pm cut off
- Thank you for your support!

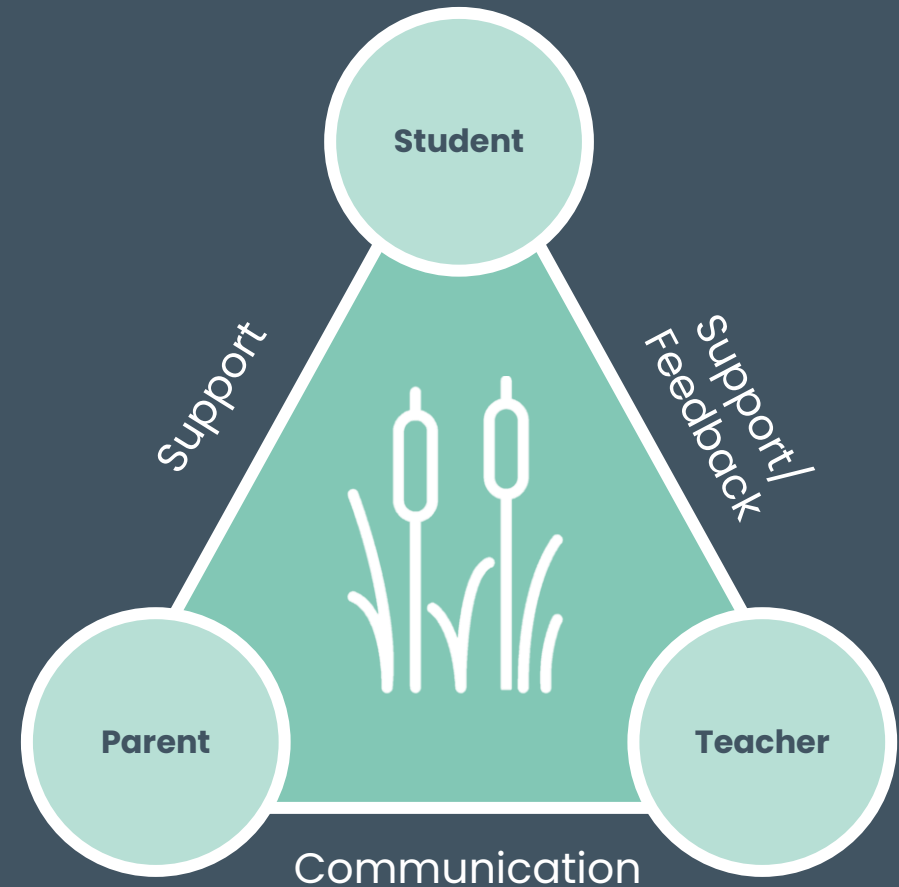
Our students can be 11 years old

- Space
 - Facilities
 - Calm environment
-
- Chess, football, table tennis, chatting, basketball, volleyball, reading



The parents' role

- A trinity – school, parent, student
- Check the Homework App
- Ensure uniform is correct
- Clear communication if there are issues
- Be ready to come in to discuss matters face to face





GET INVOLVED

JOIN THE PTA

Evaluation and Evolution



Parent
Forum
11.11.25
6.30pm

Your voice will matter!

Where are we now?

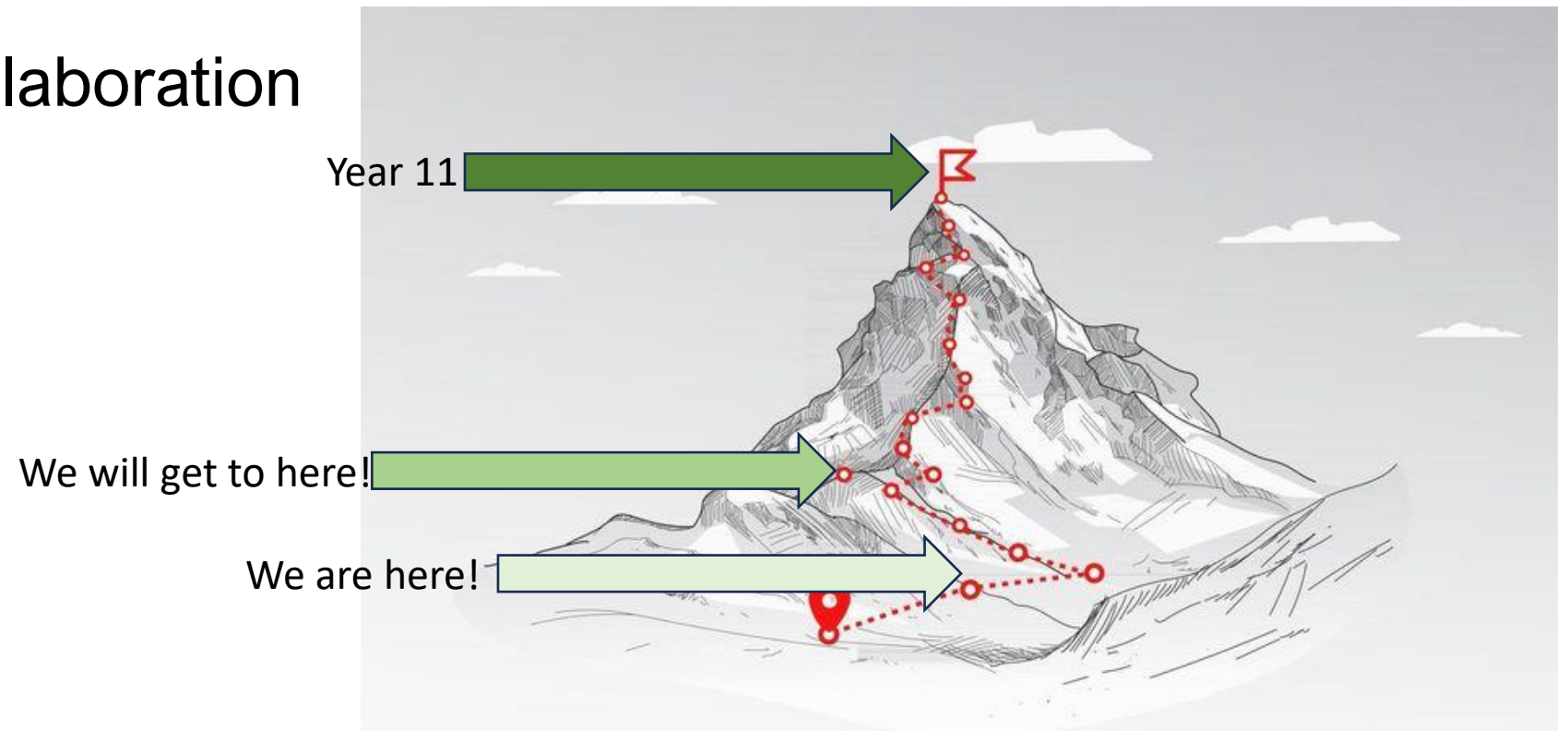
- A calm, quiet, safe environment
 - Focused classrooms with students excelling
 - Opportunities for character development
 - Well-nourished students
 - A strong community
-
- Some logistical tweaks needed as always but better never stops!

Miss Moore- Head of Year 7

- Curriculum
- Teaching and Learning
- Attendance
- Form Tutors

Making a success of Year 7

- Home-school collaboration



Supporting with Homework and Routines

- Morning and evening routines
- Designated space and time for homework
- Time management for life outside of school
- Student responsibility and independence



Encouraging Independence

- Using their planner for homework and deadlines
- Packing their school bag the night before
- Gradually help them take responsibility for preparing for school

Encourage Communication

- What was the best part of your day?
- Talk about the challenges
- School events and parent's evenings
- Working together as a team



Celebrate the successes

We want to celebrate the Small and Big Wins

- Academic progress
- School values
- Dining and poetry stars
- Tutor nominations
- Subject nominations
- Top merits

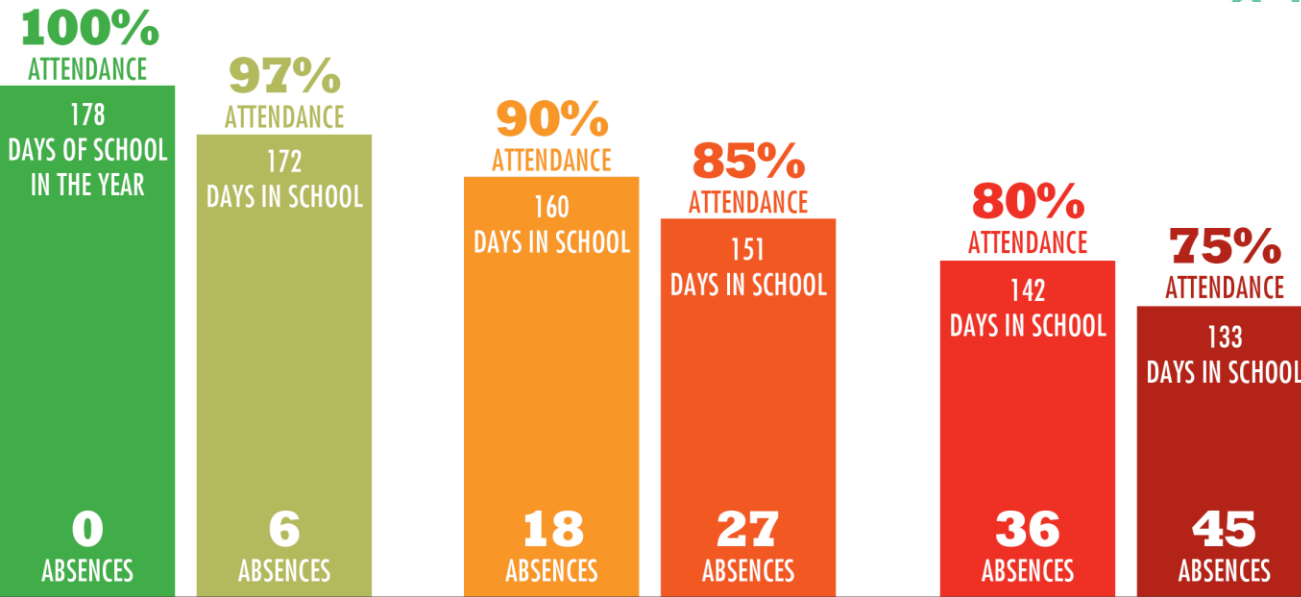


Don't forget to celebrate the
small wins

Any win is worth celebrating.

Small wins are signposts that lead to bigger wins, and better habits, later.

Attendance



We're impressed!

GOOD ATTENDANCE
Students who are present in the classroom have a great chance for success!

We're concerned...

CHRONICALLY ABSENT
Students who miss 10% of school or more may show reduced grade point averages and scores.

We're worried!

EXTREMELY ABSENT
Students who miss more than 20% of school are less likely to graduate high school.

- School success starts with attendance. Every school day counts
- If your child is absent from school, we ask that you contact us each morning, *this can be done through MCAS*
- Please book routine GP, Dentist, Orthodontist appointments outside school hours
- We regularly report on student attendance. Identifying patterns of absence is a helpful way for us to assess pastoral issues.
- Our aim is for all students to record attendance above 96%

Below 90% attendance = on average ½ day missed every week.....
Equates to 4 weeks over a school year.

In five years of school that's around half a year's absence



Aim High



Be Inclusive



Work Together



**RIVER
ACADEMY**

Pastoral Care and Support

Form Tutor- The Form Tutor is your first point of contact.

Head of Year- Serious matters or concerns

Behaviour Support/ Family Liaison Worker- to share a problem

Student Services- If you are feeling unwell

External agencies when appropriate

Reach out if you feel your child needs some extra support in and around school

NB: Whilst we make every effort to respond as quickly as possible, the school has a policy to respond within 3 working days.



Aim High



Be Inclusive



Work Together



**RIVER
ACADEMY**

Year 7 Pastoral Team

7.1 Thames- Mx Bowler

7.2 Kennet- Ms Gopalan

7.3 Pang – Ms Cole

7.4 Loddon- Mr Dukinfield

7.5 Lambourn- Ms Chow

7.6 Avon- Ms Myers

The Bridge- Ms Basham

A Bookletised Curriculum



RIVER ACADEMY
ENGLISH
Yr7 Gothic Monsters



NAME:

TEACHER/CLASS:



RIVER ACADEMY
HISTORY
Yr7 An Introduction to History



NAME:

TEACHER/CLASS:



RIVER ACADEMY
PERSONAL DEVELOPMENT
Yr7 Identity



NAME:

TEACHER/CLASS:




RIVER ACADEMY
FRENCH
Yr7 C'est parti!




NOM:

PROFESSEUR/CLASSE:



RIVER ACADEMY
GEOGRAPHY
Yr7 First Steps in Geography



NAME:

TEACHER/CLASS:

A Bookletised Curriculum

Icons



Activating prior knowledge

Remember what you already know about a topic before you start to learn something new, to help build connections in your long-term memory.



Retrieval practice

Quizzing, recall and memory activities to slow down the rate of forgetting!



New knowledge

Learn something new through reading, teacher explanation, diagrams, listening to or watching something.



Processing knowledge

Do something with your new knowledge to help you understand it better.



Guided practice

Work collaboratively with your teacher as you strengthen new skills.



Independent practice

Using your knowledge and understanding to complete a piece of quality work independently.



Reflect and respond

Thinking about what you have learned, what went well and what you could improve next time.

5 a Day

1. What is the definition

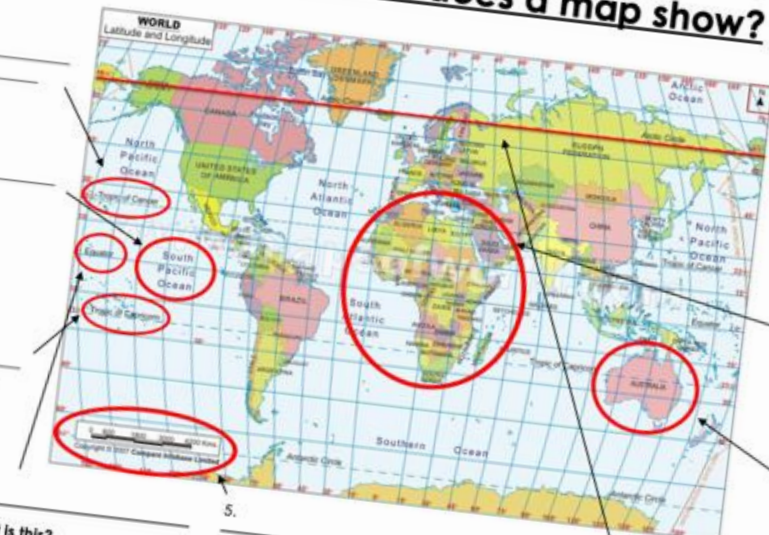
2. List three examples

3. What is the definition

4. List three examples

5. What emotional

What information does a map show?



1. _____

2. _____

3. _____

4. _____

5. _____

6. _____

7. _____

8. _____

9. _____

What does this show?

What is this?

What is this?

What are these?



Extension: Fill in the missing blanks and say what the map shows



Aim High



Be Inclusive



Work Together



RIVER
ACADEMY

The River Way

“Excellence, then, is not an act but a habit”

(Durant, discussing the writing of Aristotle, 1926:87)



Aim High



Be Inclusive



Work Together



RIVER
ACADEMY

The River Way

1. The focus is on teaching and learning at all times



Aim High



Be Inclusive



Work Together



**RIVER
ACADEMY**

The River Way

1. The focus is on teaching and learning at all times
2. The very best chances of success for every student, every day



Aim High



Be Inclusive



Work Together



RIVER
ACADEMY

The River Way

1. The focus is on teaching and learning at all times
2. The very best chances of success for every student, every day
3. **Consistency and alignment across our classrooms**



Aim High



Be Inclusive



Work Together



RIVER
ACADEMY

The River Way

1. The focus is on teaching and learning at all times
2. The very best chances of success for every student, every day
3. Consistency and alignment across our classrooms
4. **We work in a school, not in isolation.**



Aim High



Be Inclusive



Work Together



RIVER
ACADEMY

The River Way

1. The focus is on teaching and learning at all times
2. The very best chances of success for every student, every day
3. Consistency and alignment across our classrooms
4. We work in a school, not in isolation.
5. Routines of lessons are 'normalised' – turn and talk, 100% hands up, choral responses, etc.



Aim High



Be Inclusive



Work Together



RIVER
ACADEMY

The River Way

1. The focus is on teaching and learning at all times
2. The very best chances of success for every student, every day
3. Consistency and alignment across our classrooms
4. We work in a school, not in isolation.
5. Routines of lessons are 'normalised' – turn and talk, 100% hands up, choral responses, etc.
6. **100% is the minimum acceptable level of compliance in response to any instruction.**



Aim High



Be Inclusive



Work Together



RIVER
ACADEMY

Home Learning

- Purpose and value
- Explicitly connected to the curriculum
- Review, repeat, rehearse





Home Learning – Quantity

Subject	Frequency	Length	Delivery
Maths	Weekly	60 minutes	SparxMaths
Science	Weekly	60 minutes	SparxScience
English	Weekly	60 minutes	SparxReader
Geography	Every other week	30 minutes	Booklet
History	Every other week	30 minutes	Booklet
RP	Every other week	30 minutes	Booklet
French	Every other week	30 minutes	Booklet
Art	Every other week	30 minutes	Booklet
Food Tech	Every other week	30 minutes	Online/Booklet/Practical
Other subjects	Approx one per half term		Various



Aim High



Be Inclusive



Work Together



RIVER ACADEMY

Home Learning

RIVER ACADEMY
HOME LEARNING
Yr7 R.P.E
What is Religion,
Philosophy and Ethics?
NAME:
.....
TEACHER/CLASS:
.....

1. Knowledge Organiser
2. Pre-planned Tasks aligned to Curriculum Booklet and making use of the Knowledge Organiser

Y7 RPE Autumn Term: Knowledge Organiser

Key points about Christian beliefs:
While there are many different types of Christians, the majority of Christians share the same basic beliefs. All Christians believe in one God, and most also believe that Jesus was God's son sent to earth in human form. Jesus was put to death but was resurrected and ascended to heaven. Christians believe that the events of Jesus's life are important, and that people should follow his teachings.

Many Christians worship in special buildings such as churches or chapels, and Christian worship can be different depending on the denomination.

Some Christians like to follow a set pattern in their worship, for example, attending weekly services that include specific readings and set prayers. Other Christians worship less traditionally, choosing to sing songs, pray out loud and even dance and wear flags.

The cross is the symbol of Christianity. Jesus Christ was executed by the Romans and died by being crucified on a wooden cross. Christians remember his death and resurrection by wearing crosses. Sometimes crosses will have a figure of Jesus on them. These are called crucifixes.

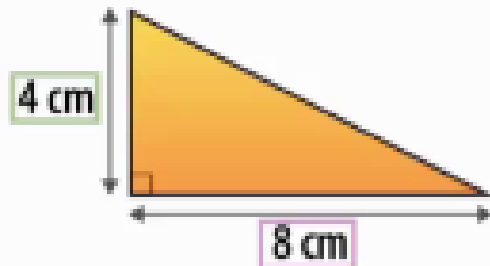
Key Terms	Definition
Worldviews	A particular philosophy of life or view of the world that shapes our beliefs about the world.
Census	A census is a count of the population taken on a particular date. In the UK it happens every 10 years - the last one was 2021.
Humanism	Humanism is a philosophy of life that suggests people do not need God to live a good life. It is a person's responsibility to lead an ethical life because of personal fulfillment that aspires to the greater good rather than because of rules set out by a God.
Theist	A person who believes in God or gods.
Atheist	A person who does not believe in any gods.
Agnostic	A person who does not believe they have enough evidence to say whether God exists or not.
Places of worship etc.	Buildings used by religions - Churches, Mosques, Synagogues, Temples, Mandirs, Wats, Gurdwaras etc.
State	The government. In the phrase separation of Church and State is the idea that government should remain neutral toward all religions and not officially recognise or favour any one religion. In the separation of church and state, church refers to religion in general, while state refers to the government.
Community	A group of people living in the same place or having a particular characteristic, in common.
Worship	Talk or behaviour that treats God or the gods.
Freedom of choice	The idea that people can choose whatever they wish.
Philosophy	Love of wisdom / search for truth.
Evidence	Information which tries to support a theory.
Theory	A reasonable explanation or guess which seeks to explain something.
Judgement	A set of reasons that help support an idea.
Logic	Sensible or a judgement based on reasons.
Eternal	Lasts forever.
Omnipotent	All powerful.
Creator	Made everything.
Crucifixion	Roman method of execution by which criminals were fixed to a cross.
Purgatory	The Catholic belief in an intermediate state where souls are cleansed ready for heaven.
Sociology	The study of society.
Marxism	A social and political idea about society. Marxists believe that the poor are being oppressed by the rich and powerful.
Oppressed	Being subject to harsh treatment.
Psychology	The study of the human mind and behaviour.

Homework Task 4:

1. Using your knowledge from our lessons add a title for each image to show what happened. You can use the headings below to help but you will need to put them in the right order
2. What does the resurrection mean for Christians? Write out your answer in the booklet. You can use bullet points or full sentences.

Support video

Find the area of the triangle below. Give your answer in cm^2 .



Not to scale

$$\text{area of a triangle} = \frac{1}{2} \times \text{base} \times \text{perpendicular height}$$

$$= \frac{1}{2} \times 8 \times 4$$

$$= \frac{1}{2} \times 32$$

$$= 32 \div 2$$

$$= 16$$

Multiplying by $\frac{1}{2}$ is the same as dividing by 2

Side working

$$\begin{array}{r} 16 \\ 2 \overline{) 32} \\ \underline{2} \\ 10 \\ \underline{10} \\ 0 \end{array}$$

Remember units (cm^2)

$$16 \text{ cm}^2, \underline{\underline{\text{ans}}}$$

0:00 / 0:42



Close video X

Answer

Spa

Online

cm^2 .



Aim High



Be Inclusive



Work Together



RIVER
ACADEMY



100% Completion Rates

Sparx Reader: 1st out of 880 schools

Sparx Maths: 1st out of 2635 schools



Aim High



Be Inclusive

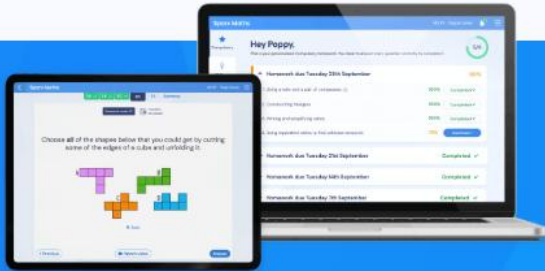


Work Together



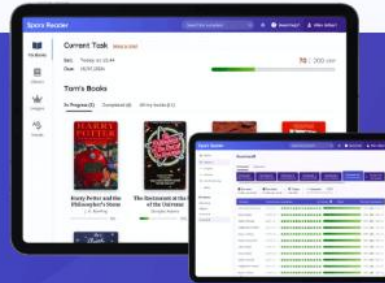
RIVER
ACADEMY

Sparx Learning



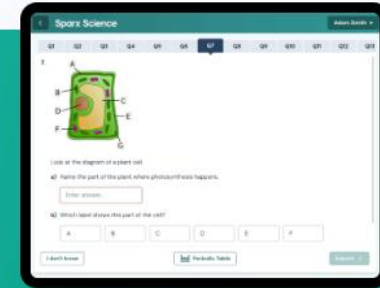
Sparx Maths

Building maths confidence through personalised homework.



Sparx Reader

Building confident readers through regular reading practice.



Sparx Science

Improving scientific knowledge through thoughtful practice.

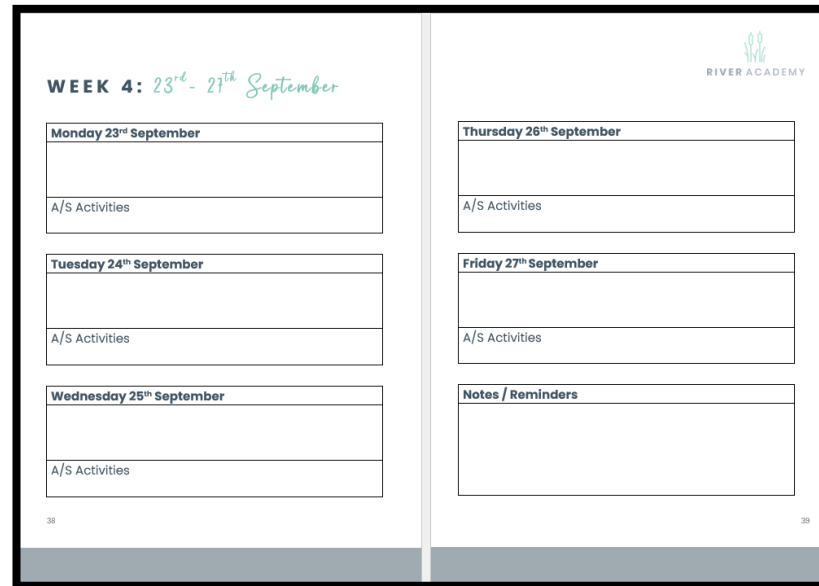
Home Learning will be recorded...

1. On Class Charts
2. In students' planners – they will be asked to write down a note of what needs to be done and when it is due.



RIVER ACADEMY
STUDENT PLANNER
Autumn 1 24-25

NAME: _____
TUTOR: _____
GROUP: _____



WEEK 4: *23rd - 27th September*

Monday 23rd September

A/S Activities

Tuesday 24th September

A/S Activities

Wednesday 25th September

A/S Activities

Thursday 26th September

A/S Activities

Friday 27th September

A/S Activities

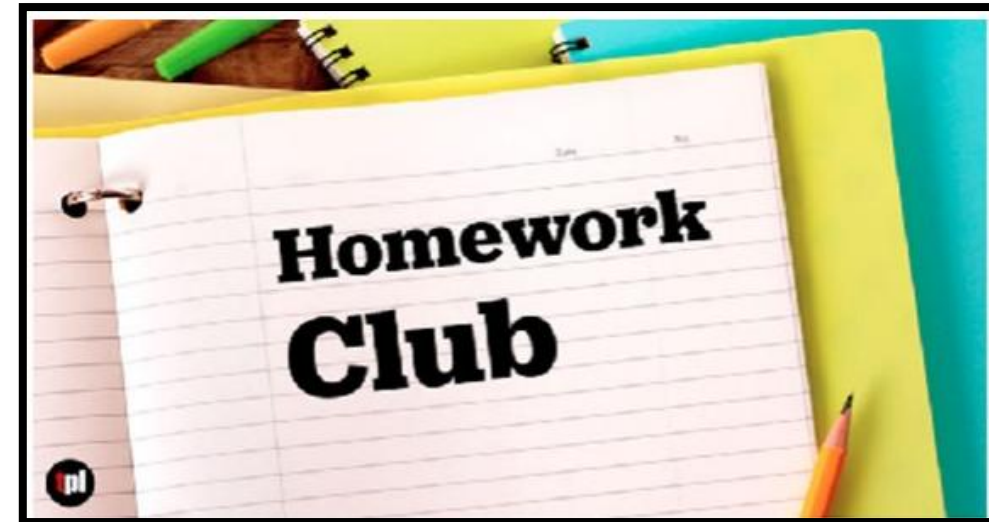
Notes / Reminders

38 39

And we are here to help...

Weekly Supported Study Lessons – students complete some Home Learning and are taught the relevant skills to become an independent learner.

Homework Club – Tuesday and Thursday – 3:35-4:30pm, in the LRC



How can you help?

1. Check in – with your child, and class charts, **do not let your child get ahead in any home learning booklet**
2. Support with organisation
3. Help with a quiet space – or guide to our quiet space!
4. Develop routines, e.g. phones
5. Communicate with us

SEND and River

ASSESS –

- Transition
- Data
- Parents
- Student
- Staff



IDENTIFY - What are the needs?

- Cognition & Learning
- Communication & Interaction
- SEMH
- Physical & Sensory



PLAN –

- Student-centred focus
- SEN Support *Plan*
- Interventions



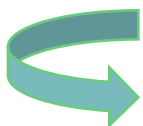
DO –

- The River Way
- Staff following strategies on SEN Support Plans and Passports
- A range of bespoke interventions



REVIEW –

- Feedback from staff
- Student voice
- Meeting with parents
- Data



SEND Support at River

ASSESS –

- Transition – we have collated the shared information from Primary schools
- Data –we have KS2 SATs results; we will have NGRT reading test results next week
- Parents –we have been working together with parents to establish good working relationships - trialling parents accessing SEN Support plans online;
- Students – we are getting to know our students; identifying issues, triggers, needs
- New start - what are our teaching and support staff noticing in our context at River Academy?

SEND Support at River

- Quality First Teaching; teacher-led lessons via visualiser and bookletised curriculum
- All students expected to go to every lesson; maximising time spent in class; building resilience, self-esteem, good learning habits
- Teachers follow strategies on SEN Support Plans
- Teachers know and monitor students with SEND - identify the need for bespoke interventions led by Teaching Assistant team
- Teaching Assistants not deployed in class; support with interventions building skills and resilience; interventions targeted around non-core lessons
- Line ups and Tutor time give notice of change
- Students with SEND have equal access to broad offer of extra-curricular activities and social opportunities of the school day

How the River Way supports learners with SEND

- Consistency across every lesson offers reassurance throughout the day
- Orderly transitions minimise sensory overload
- Calm compliance in class maximises focus and attention
- Quiet focus ensures learning is accessible to all
- ***Be Seen Looking*** teacher scanning and circulating can anticipate and redirect misunderstandings
- Clear instructions minimise confusion
- ***Turn and Talk*** alleviates social pressure
- Modelling positive behaviours promotes improved social interactions
- ***Ruler Reading*** scaffolds text accessibility for weak readers
- ***Choral Response*** provides safety in numbers
- ***All Hands Up*** avoids perceptions of injustice

Reading at River

All teachers are teachers of reading.

- Bookletised curriculum
- Tutor reading
- 'The River Way'
- Sparx Reader
- Reading for pleasure (reading lists and the River Canon)



Celebrating Success

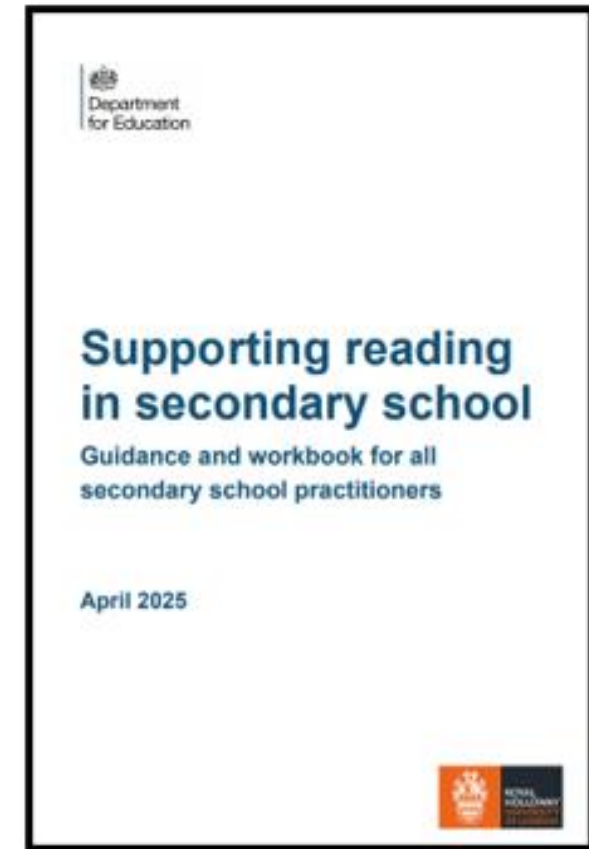
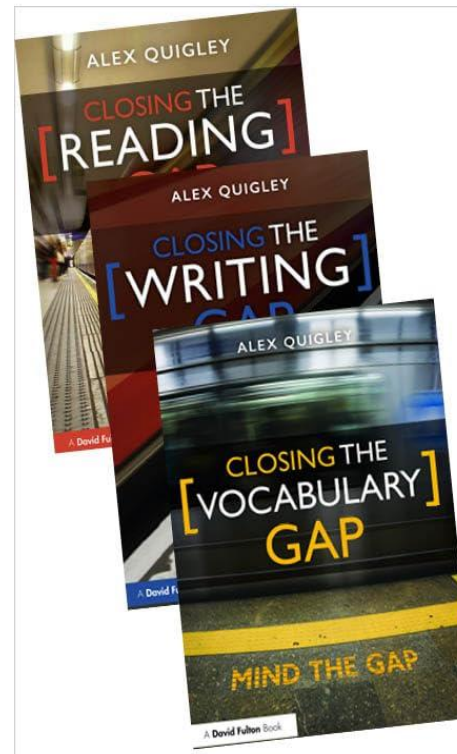
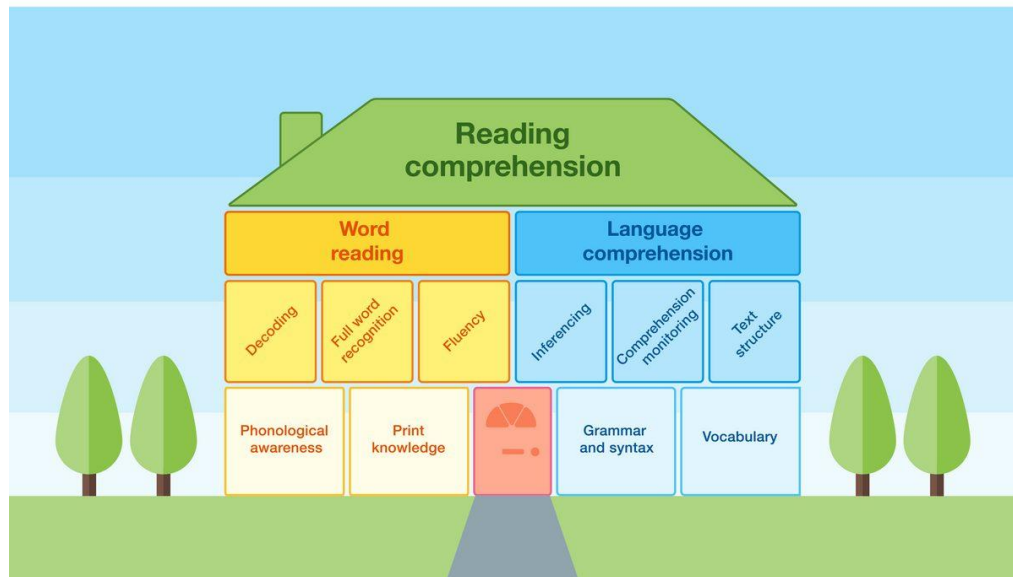
Progress category	National	Group (Start point to end point)	
	%	%	No. of students
Much higher than expected progress	10%	20%	36
Higher than expected progress	15%	21%	37
Expected progress	50%	52%	93
Lower than expected progress	15%	6%	11
Much lower than expected progress	10%	1%	2

Celebrating Success



A Research Informed Approach

Figure 2: Reading comprehension—the sum of many parts
Adapted from Hogan, Bridges, Justice, and Cain (2011)



How can I support my child at home?

- Encourage them to read and talk about books.
- Ask them questions about what they are reading e.g. 'What impression do you have of X so far?'
- Encourage your child to read different types of texts/genres/books that are age appropriate for them. Getting them involved with the River Canon and using the reading lists will be helpful.
- Take them on a visit to the local library.
- Help them stay on top of their Sparx Reader.